

Supplemental Figure 1. Cohort selection flow chart

Supplemental Figure 2. Cumulative incidence of stroke within one year after cardiac surgery.

Supplemental Figure 3. Cumulative incidence of long-term care (LTC) admissions within one year after cardiac surgery.

Supplemental Figure 4. Cumulative incidence of recurrent non-elective hospitalizations (≥ 3 episodes per year) within one year after cardiac surgery.

Supplemental Figure 5. Cumulative incidence of disability, stratified by patient age within one year after cardiac surgery.

Supplemental Figure 6. Cumulative incidence of death, stratified by patient age within one year after cardiac surgery.

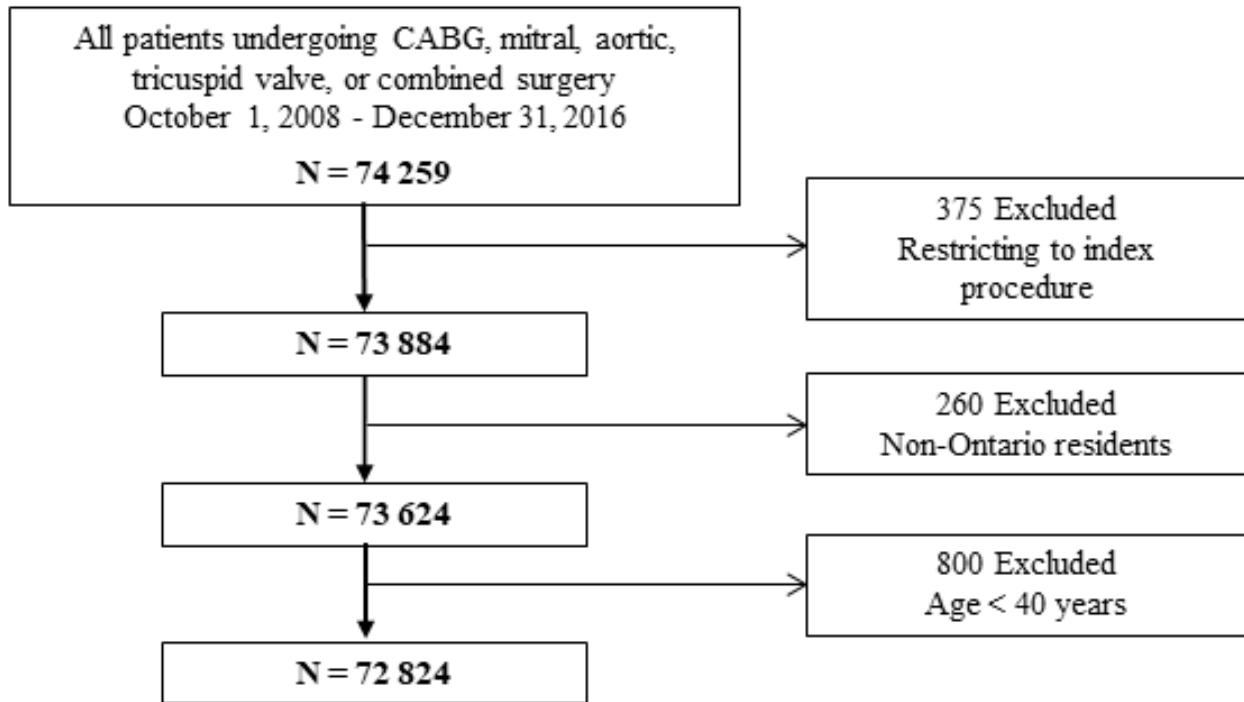
Supplemental Figure 7. Cumulative incidence of disability or death, stratified by patient age within one year after cardiac surgery.

Supplemental Table 1. Codes used to identify surgical procedures from the CorHealth Ontario Registry.

Supplemental Table 2a. Cumulative incidence of events within 30 days following cardiac surgery.

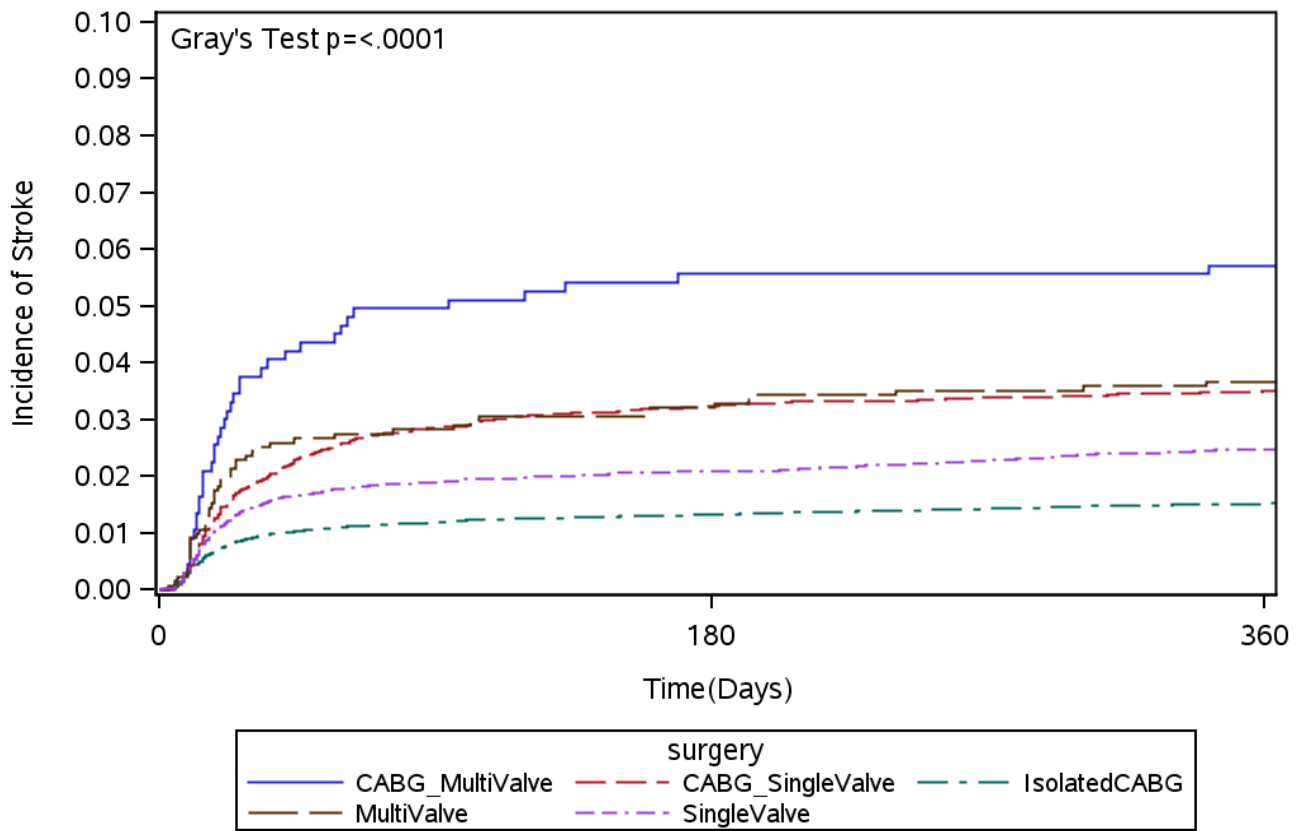
Supplemental Table 2b. Cumulative incidence of events within 90 days following cardiac surgery.

Supplemental Figure 1. Cohort selection flow chart

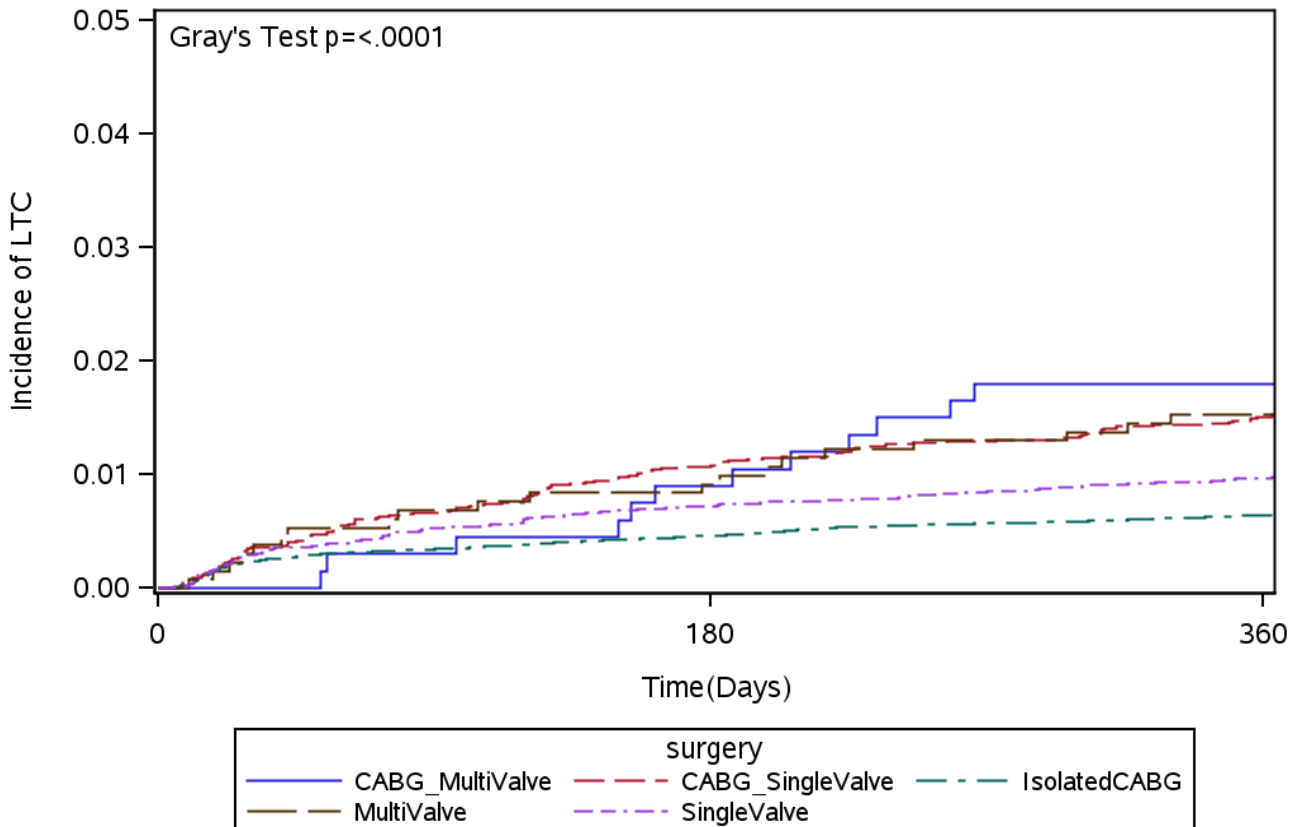


Abbreviation: CABG = coronary artery bypass surgery

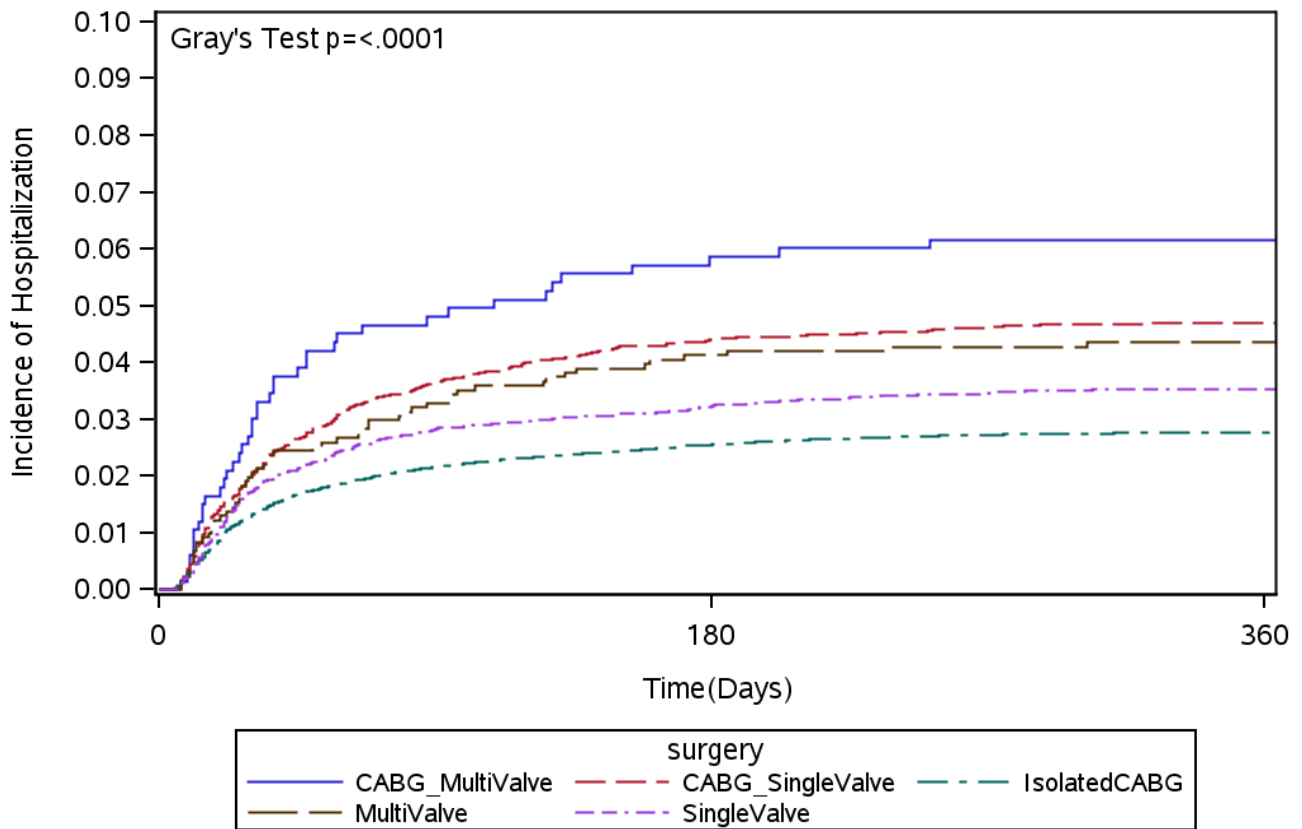
Supplemental Figure 2. Cumulative incidence of stroke within one year after cardiac surgery.



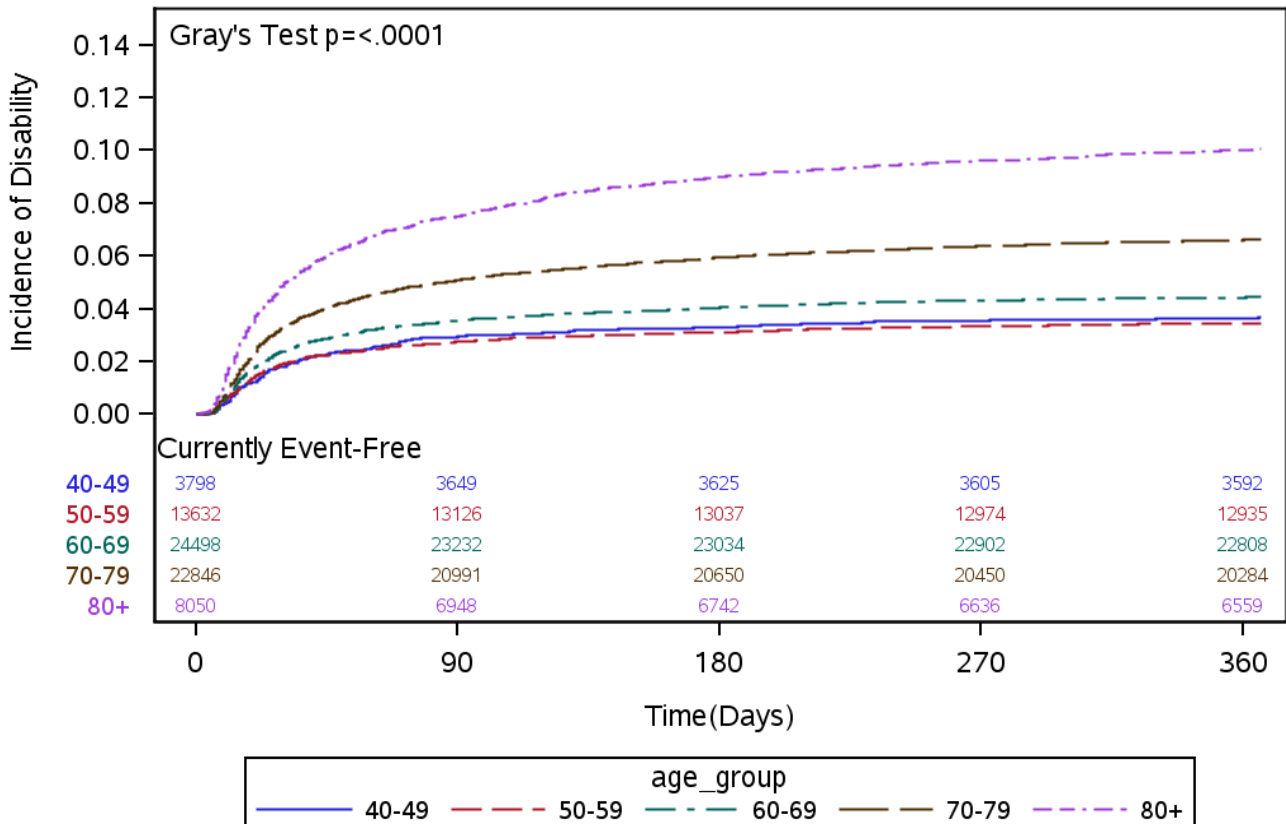
Supplemental Figure 3. Cumulative incidence of long-term care (LTC) admissions within one year after cardiac surgery.



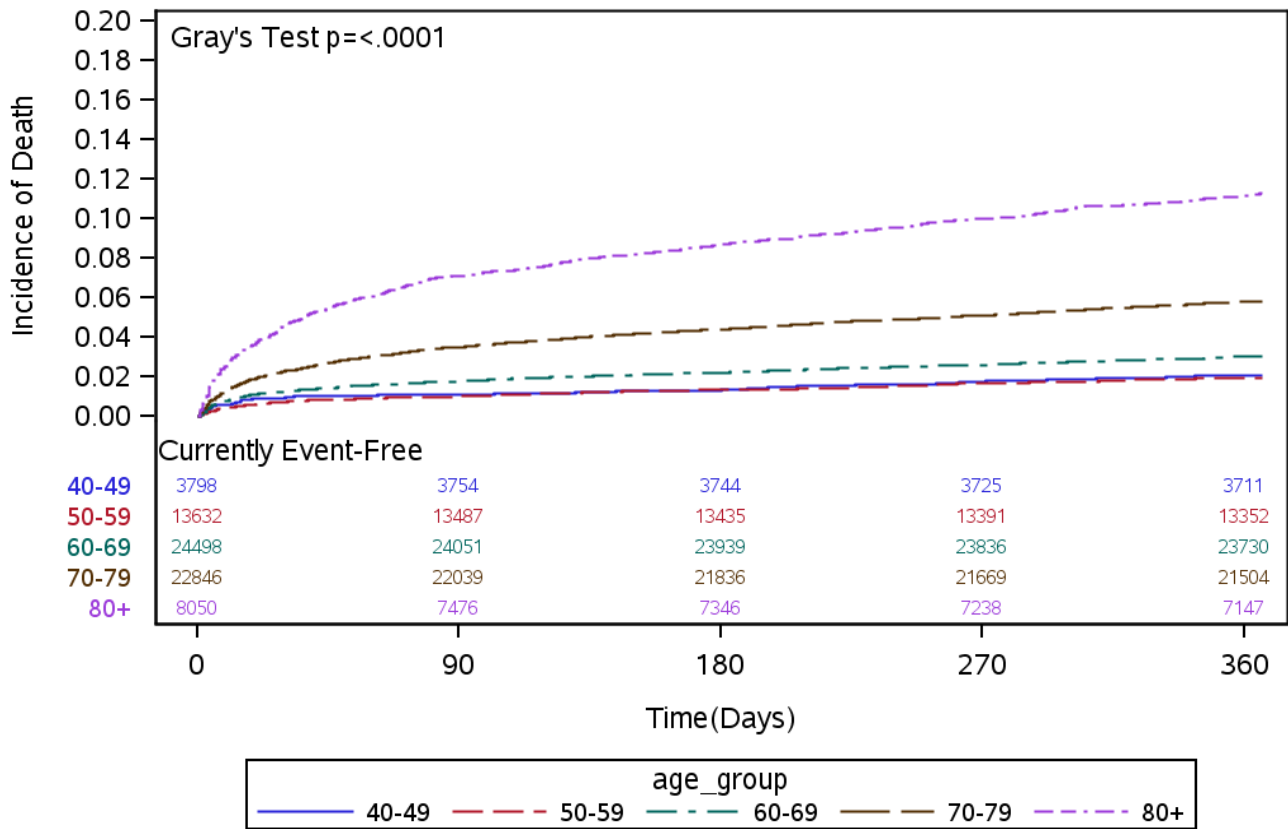
Supplemental Figure 4. Cumulative incidence of recurrent non-elective hospitalizations (≥ 3 episodes per year) within one year after cardiac surgery.



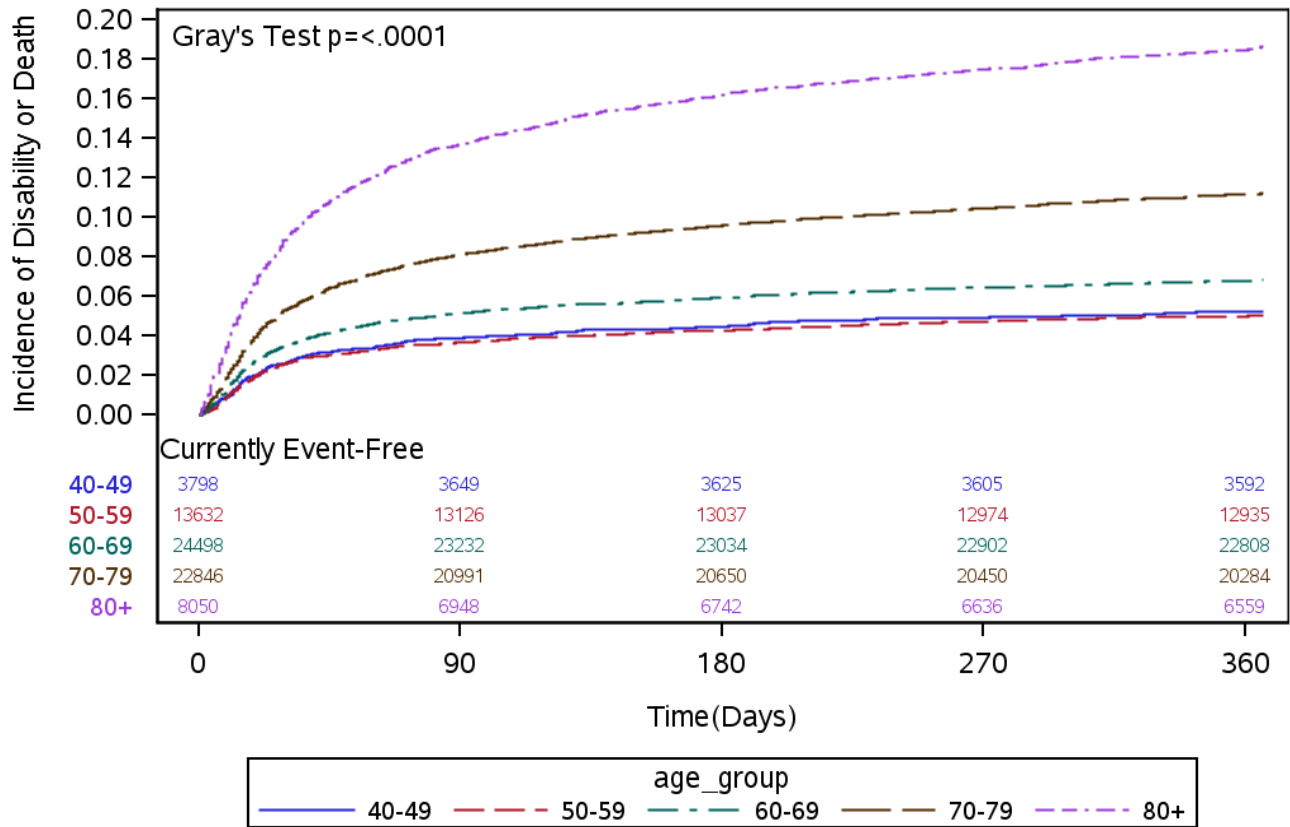
Supplemental Figure 5. Cumulative incidence of disability, stratified by patient age within one year after cardiac surgery.



Supplemental Figure 6. Cumulative incidence of death, stratified by patient age within one year after cardiac surgery.



Supplemental Figure 7. Cumulative incidence of disability or death, stratified by patient age within one year after cardiac surgery.



Supplemental Table 1. Codes used to identify surgical procedures from the CorHealth Ontario Registry.

Type of Surgery	Code
Coronary artery bypass grafting	Surgery_ByPassSurgeryIND
Tricuspid valve surgery	TricuspidValveSurgeryIND
Mitral valve surgery	Surgery_MitralValveSurgeryIND
Aortic valve surgery	Surgery_AorticValveSurgeryIND

Supplemental Table 2a. Cumulative incidence of events within 30 days following cardiac surgery.

Event, % (95% CI)	CABG	Single Valve	Multiple Valves	CABG + Single Valve	CABG + Multiple Valves
	(n=52,546)	(n=10,368)	(n=1,309)	(n=7,936)	(n=665)
Disability	1.4 (1.3 - 1.5)	2.2 (1.9 - 2.4)	3.4 (2.5 - 4.4)	3.1 (2.7 - 3.5)	5.4 (3.9 - 7.3)
Death	1.4 (1.3 - 1.5)	1.7 (1.5 - 2.0)	5.2 (4.1 - 6.5)	4.0 (3.6 - 4.5)	7.5 (5.7 - 9.7)
Disability or death	2.7 (2.5 - 2.8)	3.7 (3.3 - 4)	7.7 (6.4 - 9.2)	6.7 (6.1 - 7.2)	11.7 (9.4 - 14.3)
Stroke	1.1 (1.0 - 1.2)	1.8 (1.6 - 2.1)	2.8 (2.0 - 3.7)	2.7 (2.3 - 3.0)	5.0 (3.5 - 6.8)
≥ 3 Non-elective hospitalizations	0.1 (0.0 - 0.1)	0 (0.0 - 0.1)	0.3 (0.1 - 0.8)	0.1 (0.0 - 0.1)	0.5 (0.1 - 1.3)
Long-term care admission	0.2 (0.2 - 0.3)	0.3 (0.2 - 0.4)	0.3 (0.1 - 0.8)	0.4 (0.3 - 0.5)	0 (0.0 - 0.0)

** Comparisons between surgery type yielded $p < 0.001$ for all variables

Abbreviations: CABG = coronary artery bypass grafting

Supplemental Table 2b. Cumulative incidence of events within 90 days following cardiac surgery.

Event, % (95% CI)	CABG	Single Valve	Multiple Valves	CABG + Single Valve	CABG + Multiple Valves
	(n=52,546)	(n=10,368)	(n=1,309)	(n=7,936)	(n=665)
Disability	2.1 (2.0 - 2.3)	3.2 (2.9 - 3.6)	4.4 (3.3 - 5.6)	4.3 (3.9 - 4.8)	6.8 (5.0 - 8.8)
Death	2.1 (2.0 - 2.2)	2.6 (2.3 - 2.9)	7.3 (5.9 - 8.8)	6.0 (5.5 - 6.6)	10.2 (8.1 - 12.7)
Disability or death	3.9 (3.8 - 4.1)	5.4 (5.0 - 5.9)	10.5 (9.0 - 12.3)	9.6 (9.0 - 10.3)	15.5 (12.9 - 18.3)
Stroke	1.2 (1.1 - 1.3)	1.9 (1.7 - 2.2)	2.9 (2.1 - 3.9)	2.9 (2.6 - 3.3)	5.1 (3.6 - 7.0)
≥ 3 Non-elective hospitalizations	0.6 (0.5 - 0.7)	0.8 (0.6 - 1.0)	0.8 (0.4 - 1.5)	0.8 (0.6 - 1.0)	1.5 (0.8 - 2.7)
Long-term care admission	0.3 (0.3 - 0.4)	0.5 (0.4 - 0.7)	0.7 (0.3 - 1.3)	0.7 (0.5 - 0.9)	0.3 (0.1 - 1.0)

** Comparisons between surgery type yielded $p < 0.001$ for all variables

Abbreviations: CABG = coronary artery bypass grafting