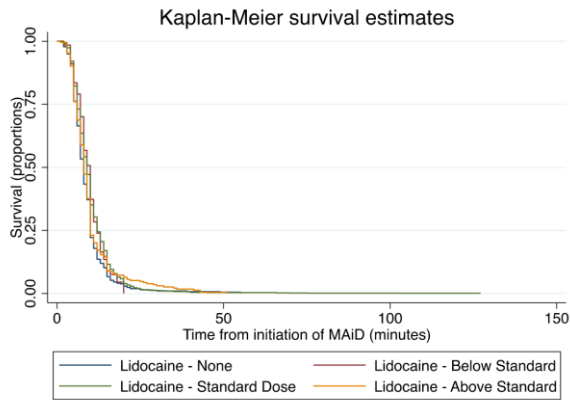
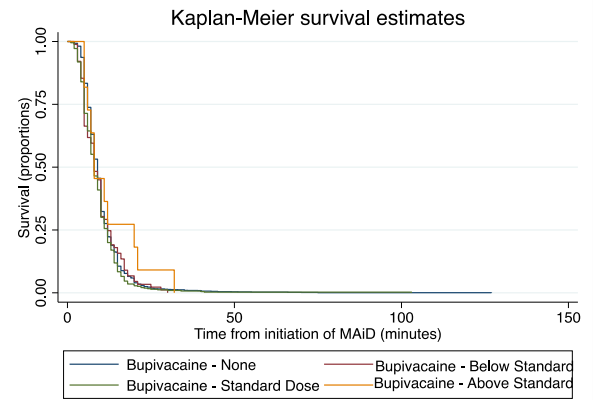


Appendix 1. Supplementary material

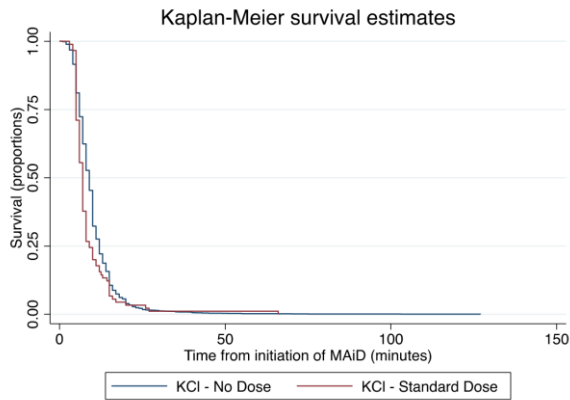
Figure S1. Kaplan-Meier survival estimates for medications used in MAiD



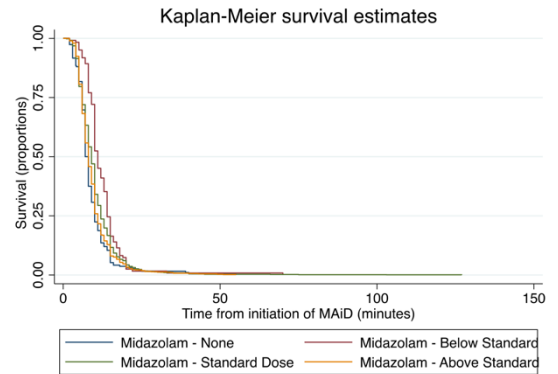
$p = 0.0001$



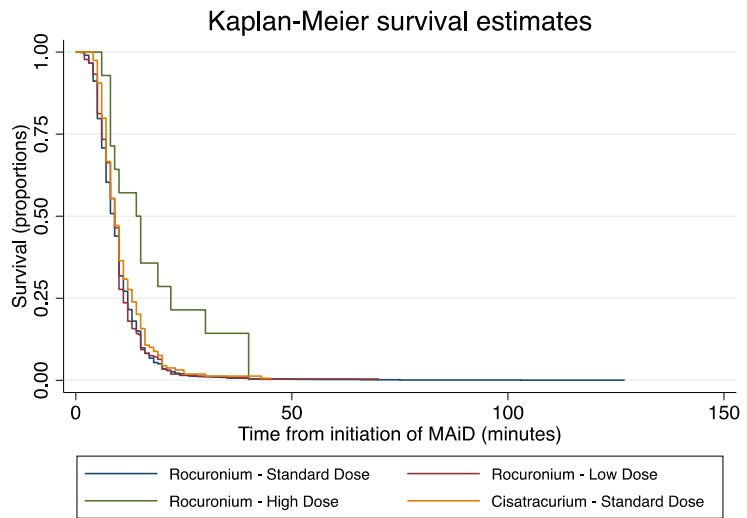
$p = 0.017$



$p = 0.3$



$p < 0.001$



$p = 0.0022$

Table S1. Sensitivity Analysis: Multivariable Adjusted Hazard Ratios for Time to Death			
	Hazard Ratio	P	95% CI
Lidocaine (ref = no dose)			
Low dose	0.8	0.107	0.6 to 1
Standard dose	0.7	< 0.001	0.6 to 0.8
High dose	0.7	< 0.001	0.6 to 0.9
Propofol (ref = Low dose)			
No dose	Insufficient observations		
Standard dose	1.1	0.343	0.9 to 1.2
High dose	0.4	< 0.001	0.3 to 0.5
Paralytic (ref = Rocuronium standard dose)			
Rocuronium			
Low dose	1.0	0.800	0.9 to 1.1
High dose	0.4	< 0.001	0.2 to 0.6
Cisatracurium			
Standard dose	0.9	0.295	0.8 to 1.1
Low dose	0.7	0.728	0.1 to 5
High dose	0.4	0.075	0.1 to 1.1

Bupivacaine (ref = no dose)			
Low dose	1.0	0.885	0.8 to 1.2
Standard dose	1.2	0.001	1.1 to 1.4
High dose	0.6	0.083	0.3 to 1.1
Potassium Chloride (ref = no dose)			
Low dose	1.3	0.626	0.5 to 3.4
Standard dose	1.5	< 0.001	1.2 to 1.9
High dose	0.6	0.285	0.3 to 1.5

