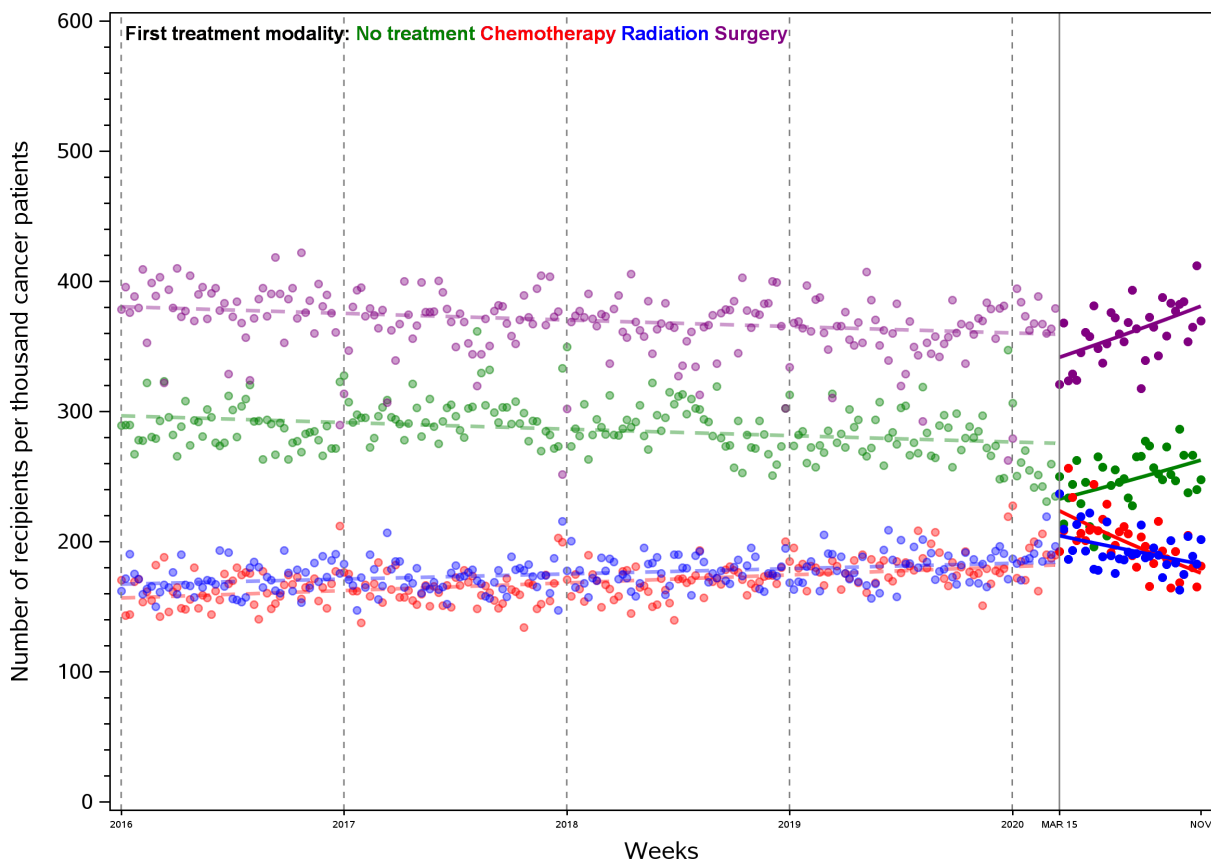


Appendix 4 Sensitivity analysis

1) Excluding patients newly diagnosed with breast cancer (n=49,541) -> Cohort n=271,994

Parameters	Surgery	Chemotherapy	Radiation	Untreated
Relative change in rate (pre-pandemic slope)	0.9997 (0.9996-0.9999) p-value<0.01	1.0007 (1.0005-1.0008) p-value<0.01	1.0004 (1.0003-1.0006) p-value<0.01	0.9997 (0.9996-0.9998) p-value<0.01
Relative change in mean rate at the start of COVID-19	0.95 (0.899-0.998) p-value=0.04	1.24 (1.17-1.31) p-value<0.01	1.11 (1.05-1.18) p-value<0.01	0.84 (0.79-0.89) p-value<0.01
Relative change in rate (further change in slope)	1.004 (1.001-1.006) p-value<0.01	0.992 (0.989-0.995) p-value<0.01	0.996 (0.994-0.999) p-value<0.01	1.004 (1.001-1.007) p-value<0.01

Number of patients by first treatment received in 1 year after diagnosis, per 1000 cancer cases



2) Excluding patients newly diagnosed with breast (n=49,541) or prostate (n=39,055) -> Cohort n=232,939

Parameters	Surgery	Chemotherapy	Radiation	Untreated
Relative change in rate (pre-pandemic slope)	0.9999 (0.99972-0.99999) p-value=0.03	1.0006 (1.0004-1.0007) p-value<0.01	1.0002 (1.0001-1.0004) p-value<0.01	0.9997 (0.9995-0.9998) p-value<0.01
Relative change in mean rate at the start of COVID-19	0.94 (0.89-0.99) p-value=0.02	1.20 (1.13-1.27) p-value<0.01	1.15 (1.08-1.23) p-value<0.01	0.85 (0.80-0.91) p-value<0.01
Relative change in rate (further change in slope)	1.004 (1.001-1.006) p-value<0.01	0.993 (0.991-0.996) p-value<0.01	0.996 (0.993-0.999) p-value<0.01	1.003 (1.000-1.006) p-value=0.02

Number of patients by first treatment received in 1 year after diagnosis, per 1000 cancer cases

